

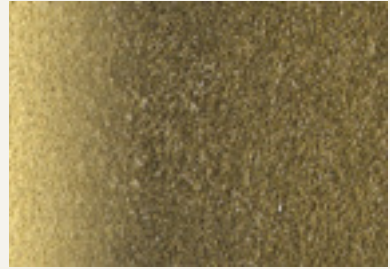
novacolor™  
I colori dell'Architettura

Texi





TEXI SILVER 004 su NOVALUX E IP 17190



TEXI GOLD 007 su NOVALUX E IP 17190



TEXI SILVER 004 su NOVALUX E IP 17176



TEXI GOLD 009 su NOVALUX E IP 17169



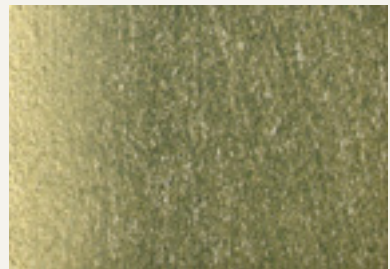
TEXI SILVER su NOVALUX E IP 17144



TEXI GOLD 009 su NOVALUX E IP 17176



TEXI SILVER 010 su NOVALUX E IP 17176



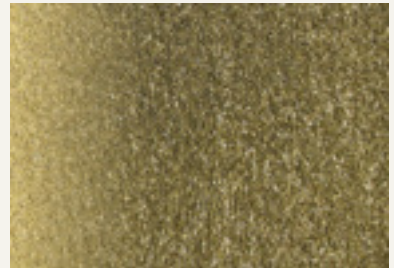
TEXI GOLD su NOVALUX E IP 17176



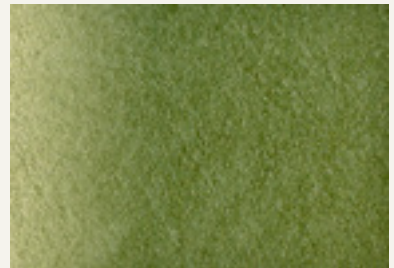
TEXI GOLD 007 su TEXI PEARL 002  
su NOVALUX E BIANCO



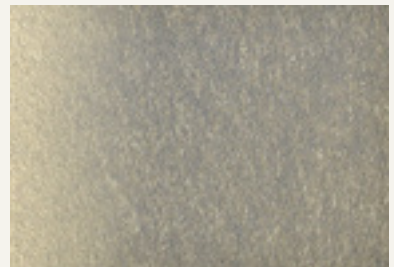
TEXI GOLD 007 su NOVALUX E IP 17176



TEXI GOLD su NOVALUX E IP 17190



TEXI GOLD 008 su NOVALUX E IP 17187



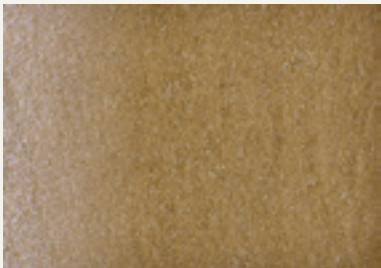
TEXI GOLD su NOVALUX E IP 17154



TEXI PEARL 005 su NOVALUX E IP 17187



TEXI PEARL 005 su NOVALUX E IP 17115



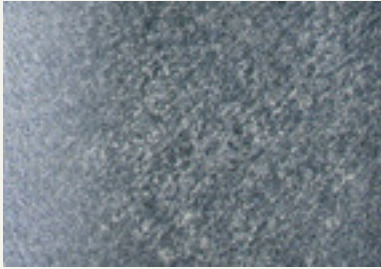
TEXI PEARL 006 su NOVALUX E IP 17128



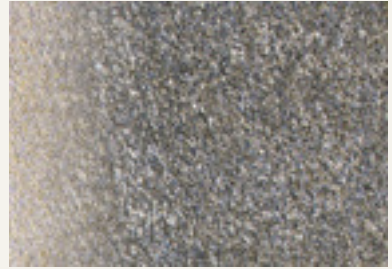
TEXI SILVER su NOVALUX E IP 17140



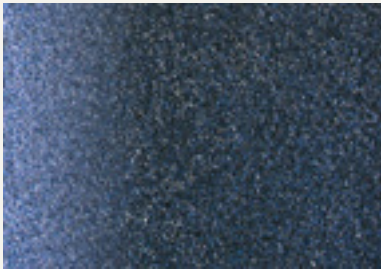
TEXI SILVER su NOVALUX E IP 17212



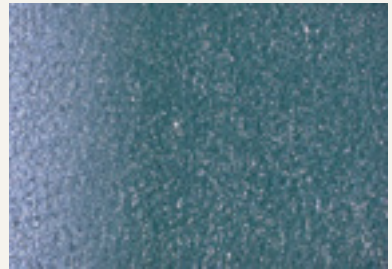
TEXI SILVER su TEXI PEARL 002  
su NOVALUX E IP 17190



TEXI GOLD su TEXI PEARL 001  
su NOVALUX E IP 17190



TEXI PEARL su NOVALUX E IP 17190



TEXI PEARL 002 su NOVALUX E IP 17176



TEXI GOLD su TEXI PEARL 001  
su NOVALUX E IP 17176



TEXI PEARL 003 su NOVALUX E IP 17140



TEXI PEARL 003 su NOVALUX E IP 17176



TEXI SILVER 004 su NOVALUX E IP 17140



**IT** Rivestimento decorativo per interni ad effetto metallizzato oro, argento e perla

Diluizione: pronto all'uso, diluizione massima 30% in volume, con acqua.

Applicazione: su fondo Novalux E, applicare Texi in due strati con pennello "spalter" o con spugna marina.

Resa: 5-7 m<sup>2</sup>/l nei due strati.

Per maggiori informazioni consultare la scheda tecnica.

**FR** Finition décorative pour surfaces intérieures, à effets métalliques Or, Argent ou Perle

Dilution: prêt à l'emploi, diluable avec au maximum 30% en volume avec de l'eau.

Application: sur Novalux E, appliquer Texi en deux couches avec pinceau de type «spalter» ou avec éponge marine.

Rendement: 5-7 m<sup>2</sup>/l en deux couches.

Pour plus d'informations, consulter la fiche technique.

**EN** Decorative finish for interiors with gold, silver and pearl metallic patterns

Dilution: ready to use, maximum dilution 30% in volume with water.

Application: on Novalux E, apply Texi in two layers with a "spalter" brush or with a sea sponge.

Yield: 5-7 m<sup>2</sup>/l in two layers.

For more information please check the technical data sheet.

**DE** Dekorative Wandbeschichtung für Innenbereichen mit Gold-Silver und Perlmutter-Zusatz

Verdünnung: bis zu maximal 30% mit Wasser verdünnen.

Austragungstechnik: Untergrund mit zwei Schichten Novalux E vorbereiten (Innenfarbe) und Texi mit Bürste oder Spalter-Pinsel oder Naturschwamm in maximal zwei Schichten auftragen.

Ergiebigkeit: 5-7m<sup>2</sup>/l in den zwei Schichten.

Für weitere Infos bitte technisches Merkblatt nachfragen.



[www.novacolor.it](http://www.novacolor.it)

Novacolor Srl  
47122 Forlì - Italia  
Via U. Aldrovandi 10  
Tel +39 0543 401840  
Fax +39 0543 414585  
[info@novacolor.it](mailto:info@novacolor.it)

**MADE IN ITALY**

Cod: N000174  
01/2018

AZIENDA CON SISTEMA  
DI GESTIONE QUALITÀ  
CERTIFICATO DA DNV GL  
= ISO 9001 =

COMPANY WITH  
QUALITY SYSTEM  
CERTIFIED BY DNV GL  
= ISO 9001 =



NOVACOLOR is committed to reduce  
the environmental impact by producing  
friendly materials.